

7. MAINTENANCE OF YOUR SMOKE ALARM

To keep your smoke alarm in good working order, you must test the alarm weekly, please refer to section 8.

If a Zinc Oxide or Alkaline battery is used in the Alarm, replace the battery at least once a year or immediately when the low battery “beep” signal sounds. The low battery “beep” should last at least 30 days.

NOTE: For the replacement battery, use Eveready No. 522, No. 1222, or No. 216; or Duracell No. MN1604; or Ultralife No. U9VL-J. Long life lithium batteries can last up to 10 years with normal smoke alarm use, however excessive false alarms may reduce the life of the battery.

WARNING: Do not use any other kind of battery. This alarm may not operate properly with another kind of battery.

Exelgard smoke alarms are virtually maintenance free. However, vacuuming the units at least once every six months is recommended to remove any accumulated dust.

Regularly wipe the unit down with a clean water moistened cloth. DO NOT IMMERSER IN WATER OR USE HOUSEHOLD CLEANERS.

Do not paint or spray with any liquid.

Test the alarm weekly using the test button.

8. FIVE YEAR EXPRESS WARRANTY

NOTE: Please keep the original purchase receipt for proof of purchase. No warranty can be offered without original purchase receipt.

(a) Subject to any statutory obligations of Exelgard which cannot be excluded, if the product becomes defective during the period of 60 months from the Date of purchase.

This obligation excludes:

- i. damage to the product caused by the Customer, pests or animals;
- ii. (damage to the Product caused by lightning, flood, fire, or other acts of God;
- iii. the replacement of batteries;
- iv. loss or theft of the Product or damage to the Product other than where Exelgard is required by statute to repair or replace the product.

LIABILITY OF EXELGARD

To the maximum extent permitted by law, and other than as expressly set out Exelgard:

- a. excludes all express or implied terms, conditions, warranties, representations, undertakings and inducements by statute or otherwise relating to the product; and
- b. excludes its liability (and that of its Related Bodies Corporate) to the Customer for any loss, damage, liability, expense, cost, charge, injury or death sustained or incurred by the Customer or any other party resulting directly or indirectly out of:

- i. the supply, performance or use of any Exelgard product or Services; or
 - ii. any breach by Exelgard in this manual including as a result of any act of God, governmental or other administration act or omission, industrial disputes, or any other matter beyond Exelgard control;
 - iii. Exelgard's negligence or that of its employees or contractors;
- c. limits its liability, and that of its Related Bodies Corporate (including liability for negligence) at Exelgard's option to:
- i. In the case of the supply of goods:
 - A. the replacement of goods or supply of equivalent goods;
 - B. the repair of the goods;
 - C. the payment of the cost of replacing the goods or acquiring equivalent goods; or
 - D. the payment of the cost of having the goods repaired or the repair of the goods;



NOTE: This device contains a small quantity of radioactive material Am241 37kBq

Distributed by Tyco Australia Pty Ltd,
t/a Exelgard

Address:
Unit 4, 2-8 South Street, Rydalmere,
NSW 2116 Australia

Telephone:
1300 300 644

exelgard

IONISATION SMOKE ALARM – EXION SERIES

USER INSTRUCTIONS

This product complies with Australian Standard AS 3786-1993 and is ActivFire listed.



TABLE OF CONTENTS

	SECTION
INTRODUCTION	1
INSTALLATION LOCATIONS - DOMESTIC DWELLINGS	2
INSTALLATION LOCATIONS - CARAVANS AND MOBILE HOMES	3
WHERE NOT TO INSTALL YOUR SMOKE ALARM	4
INSTALLING YOUR SMOKE ALARM	5
TESTING YOUR SMOKE ALARM	6
MAINTENANCE OF YOUR SMOKE ALARM	7
FIVE YEAR EXPRESS WARRANTY	8

1. INTRODUCTION

Thank you for purchasing a quality Exelgard EXION Series, Photoelectric smoke alarm. The EXION Series is powered by a 9v DC battery (included).

Your Exelgard smoke alarm is designed to sense smoke and particles of combustion that enters the unit's detection chamber. This smoke alarm is designed to give early warning of developing fires by giving off the alarm sound from its built-in alarm sounder. It is designed to provide precious time for you and your family to escape before a fire spreads. However, the smoke alarm makes such pre-warning of a fire incident possible only if the alarm is located, installed, and maintained as per these user instructions.

WARNING: SMOKE ALARMS HAVE LIMITATIONS Smoke alarms are not designed to detect heat or flame. Smoke alarms are not foolproof and are not warranted to protect lives or property from fire. Smoke alarms are not a substitute for insurance. Being an electronic device, it is possible for the smoke alarm to fail at any time. For this reason it is recommended that more than one smoke alarm be installed. **SMOKE ALARMS MUST BE TESTED WEEKLY AND REPLACED EVERY 10 YEARS.** This smoke alarm is designed for use in residential dwellings. It is not suitable for non-residential buildings, warehouses, industrial or commercial buildings. Special purpose non-residential buildings require special fire detection and alarm systems. This smoke alarm alone is not a suitable substitute for complete fire detection systems for buildings where many people live or work, such as hotels or motels.

2. INSTALLATION LOCATIONS – DOMESTIC DWELLINGS

The Exelgard EXION Series Smoke Alarms are domestic units designed to be mounted on ceilings in single or multi-storey residential dwellings, such as houses, units and apartments. If the alarm cannot be installed on the ceiling, wall mounting is acceptable in most cases.

- Install at least one Smoke Alarm on each level or storey of a multi-story dwelling.
- Install a Smoke Alarm in the immediate vicinity of bedrooms.
- If there is more than one sleeping area, locate additional alarms in the immediate vicinity of these areas. Sleeping areas are often located furthest from the exits of a home. We recommend, smoke alarms be installed on all exit routes from bedrooms.
- Smoke Alarms should be installed in every room where a smoker sleeps with the door closed.
- Install smoke alarms at both ends of a hallway that is more than 9 metres long.
- Install a smoke alarm inside every room where one sleeps with the door partly or completely closed. The hallway alarm may not be loud enough to wake the sleeper if the door is closed.

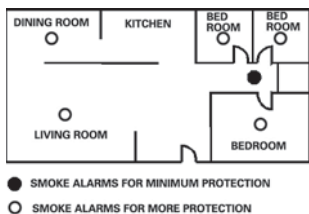


Figure 1

LOCATIONS FOR INSTALLING SMOKE ALARMS IN A SINGLE-FLOOR RESIDENCE WITH ONLY ONE SLEEPING AREA

- Install second-floor alarms at the top of the first-to-second floor stairwell.
- Be sure no door or other obstruction blocks the path of smoke to the alarm.
- Install additional alarms in your living room, dining room, family room, attic, utility and storage rooms.
- Install smoke alarms as close to the centre of the ceiling as possible. If this is not practical, put the alarm on the ceiling, no closer than 300 mm from any wall and 600 mm from any corner, as shown in Figure 4.

When mounting a smoke alarm on a wall, use an inside wall with the top edge of the alarm a minimum of 300 mm and a maximum of 500 mm below the ceiling and at least 600 mm from any corner, as shown in Figure 4.

If your rooms have sloped, peaked, or gabled ceilings, smoke alarms must be installed 500 mm – 1500 mm, measured horizontally, from the highest point (apex) of the ceiling as shown in Figure 5.

3. INSTALLATION LOCATIONS - CARAVANS AND MOBILE HOMES

Many caravans and mobile homes may not be well insulated, enabling extreme heat or cold to be transferred from outside through the walls and roof. This may create a thermal barrier which can prevent smoke from reaching a smoke alarm mounted on the ceiling. If this situation exists, install your smoke alarm on an inside partition between 300 mm and 500 mm from the ceiling. If you are not sure but you notice the walls and ceilings are either hot or cold, install the alarm on an inside wall. For minimum protection, install one alarm close to the bedrooms. For additional protection refer to the single residence plan (Figure 1).

In caravans and mobile homes, it is particularly important to install smoke alarms as far away as possible from cooking areas to reduce the potential for nuisance alarms.

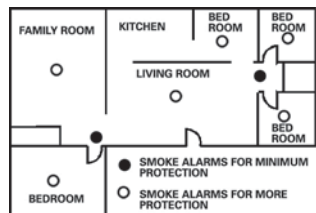


Figure 2

LOCATIONS FOR INSTALLING SMOKE ALARMS IN A SINGLE-FLOOR RESIDENCE WITH MORE THAN ONE SLEEPING AREA

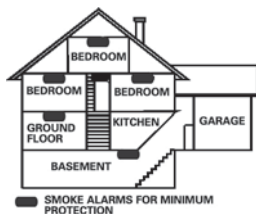


Figure 3

LOCATIONS FOR INSTALLING SMOKE ALARMS IN A MULTI-FLOOR RESIDENCE

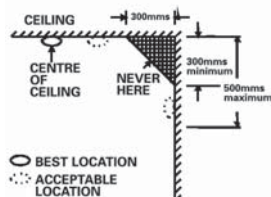


Figure 4

RECOMMENDED BEST AND ACCEPTABLE LOCATIONS TO MOUNT SMOKE ALARMS

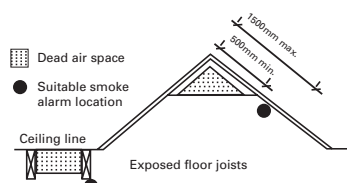


Figure 5

RECOMMENDED LOCATION TO MOUNT SMOKE ALARMS IN ROOMS WITH EXPOSED BEAMS OR SLOPED, GABLED, OR PEAKED CEILING

4. WHERE NOT TO INSTALL YOUR SMOKE ALARM

Installing a smoke alarm in an unsuitable location can create many problems. Obstructions may prevent the alarm from giving early warning in the event of fire. Its location may also lead to nuisance (false) alarms. To avoid these potential problems, Exelgard EXION Series smoke alarms should not be installed in any of the following locations:

- The garage. Engine exhaust fumes may cause nuisance alarms.
- In front of forced air movement from air-conditioners, fans and heaters.
- In dead air spaces where smoke may not enter. Avoid installing alarms in the peak or upper sections of a sloping or 'A' framed ceiling, and between exposed ceiling beams, where the air does not circulate, see figure 5.
- Dusty areas. Dust may cause a smoke alarm to false alarm or even fail.
- In spray painting areas.
- Where the temperature may fall below 4°C or rise above 38°C.
- In or near very humid areas such as bathrooms. Moisture can cause false alarms.
- Near hot water heaters, space heaters or fireplaces.
- In any area that attracts insects. Some lights attract insects, particularly fluorescent and mercury vapour lamps.
- Near fluorescent lights. Electrical "noise" from fluorescent lights may cause nuisance alarms. Install smoke alarms at least 1500 mm from such lights.

WARNING: Never remove the battery to stop a nuisance alarm. Open a window or fan the air around the alarm to get rid of the smoke. The alarm will turn itself off when the smoke is gone.

WARNING: Do not stand close to the smoke alarm when the alarm is sounding. The alarm is loud in order to wake you in an emergency. Too much exposure to the sounder at close range may be harmful to your hearing.

5. INSTALLING YOUR SMOKE ALARM

After reading the "INSTALLATION LOCATIONS" and "WHERE NOT TO INSTALL YOUR SMOKE ALARMS" section in these user instructions, decide where to install your alarm.

Use the following steps to install your smoke alarm:

1. At the place where you are going to install the alarm, draw a line 150 mm long.
2. Remove the mounting bracket from your smoke alarm by rotating it counter-clockwise.
3. Place the bracket so that the two hole slots are aligned on the line. In each of the keyhole slots, draw a mark to locate a mounting plug and screw.
4. Remove the bracket.
5. Using a 5 mm drill bit, drill two holes at the marks and insert a plastic wall plug in each hole. Note: Move the smoke alarm away prior to drilling the holes to avoid contaminating the alarm with plaster dust.

6. Attach the mounting bracket to the surface by inserting the screws supplied into the plastic wall plugs.
7. Insert the battery supplied with the smoke alarm as follows:

WARNING: Do not connect the Exelgard EXION Series smoke alarms to any other alarm or auxiliary device. Connecting anything else to this alarm will prevent it from working properly, and may void the warranty.

 - a. Locate, on the reverse side of the smoke alarm, the recess provided to house the battery.
 - b. Match terminals on the end of the battery with opposite terminal connections, located in the recess on the alarm. Be sure to insert the battery in the position shown on the alarm.
 - c. With the terminals correctly matched, push the battery firmly into the connectors until it snaps into place.

NOTE: When the battery first makes contact with the alarm connections, the alarm sounder may sound for one second. This is normal and indicates that the battery is positioned properly.

NOTE: The battery is not fitted in the factory to keep it fresh until installation. It must be positioned correctly to provide DC power.

8. Line up the slots/lugs of the mounting bracket and the alarm. Push the smoke alarm onto the mounting bracket and turn it clockwise to fix it into place. Pull outwards on the alarm to make sure it is securely attached to the mounting bracket.

CAUTION: This smoke alarm comes with cover latches that will prevent the smoke alarm from being connected onto the mounting bracket if a battery is not fitted. This prevents an alarm without a battery fitted from being installed.

9. Confirm that the smoke alarm is working correctly by pressing, and holding down for about 5 seconds, the test button on the front of the smoke alarm until the alarm sounds. The alarm is a loud pulsating sound.

6. TESTING YOUR SMOKE ALARM

Test the alarm weekly by pushing firmly on the test button with your finger until the alarm sounds. Testing method may take a few seconds to sound the alarm. If the alarm fails to activate, replace the battery and repeat the test. If the alarm still fails to activate, have it replaced immediately.

WARNING: Never use an open flame to test your alarm. You may set fire to or damage the alarm, as well as your home. The built-in test switch accurately tests all alarm functions.

WARNING: When you are not testing the unit and the alarm emits a loud continuous sound, the smoke alarm has sensed smoke or combustion particles in the air. This indicates a possible serious situation, which requires your immediate attention.

The alarm could be caused by a nuisance situation. Cooking fumes or a dusty environment can cause the alarm to sound. If this happens, open a window or fan the air to remove the smoke or dust. The alarm will turn off as soon as the air is completely clear.

NOTE: Do not disconnect the battery from the alarm. This will remove your protection from a potential fire.

If the alarm begins to beep once a minute, this signal means that the battery is flat. Replace with a new battery immediately. Refer to section 9. Keep fresh batteries on hand for this purpose.